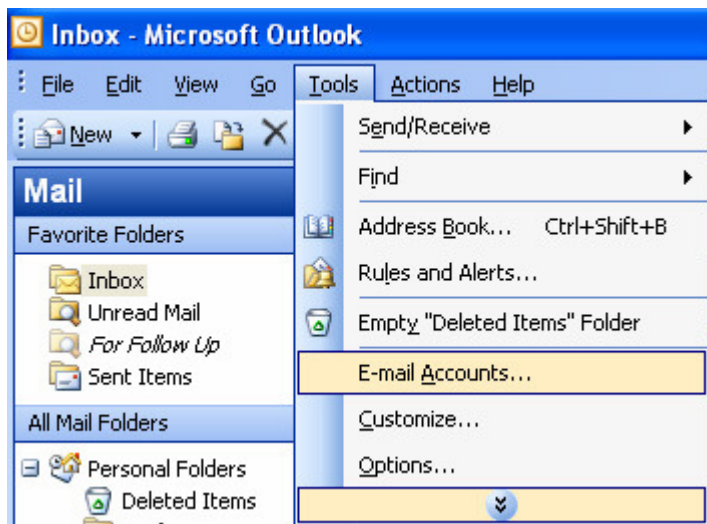


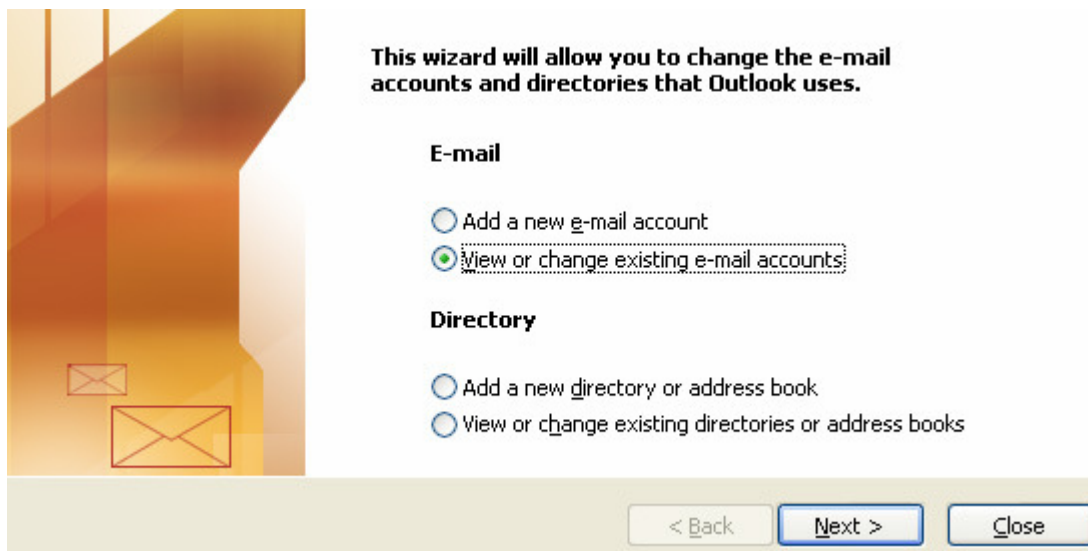
Juhendid e-posti meilikonto muutmiseks

Outlook 2003 detailne juhend

- Avage **Outlook 2003**.
- Outlook enda juhendi leiate Help-ist.
- Valige **Tools -> E-mail Accounts...**



- Järgmisena kuvatakse Teile allolev aken. Kui soovite muuta olemasolevat kontot valige **View or change existing e-mail accounts**.



Vajutage nupule **Next**.

- Järgmiseks vajutage kaks korda hiire vasaku nupuga meiliserveri nimel, mida muuta tahate või klikkige antud nimel ühe korra ja valige paremalt **Change...**

E-mail Accounts

You can select an account and change its settings or remove it.



Outlook processes e-mail for these accounts in the following order:

Name	Type
mail2.bestit.ee	POP/SMTP (Default)

Change...
Add...
Remove
Set as Default
Move Up
Move Down

Deliver new e-mail to the following location:

Personal Folders

< Back Finish Cancel

- Siin teostage muudatused lahtrites: **Incoming mail server (POP3), User name ja Password.**
 1. **Incoming mail server (POP3)** – meiliserveri address, sisestage **mail2.bestit.ee**
 2. **Account name** – kasutajanimi.
 3. **Password** – salasõna. Kui soovite, et Teie salasõna meeles peetakse, pange linnuke alla kasti **Remember password**. Kui aga soovite seda alati uuesti kirjutada, enne e-posti kontrollimist, jätke kast tühjaks.

Internet E-mail Settings (POP3)

Each of these settings are required to get your e-mail account working.



User Information	Server Information
Your Name: <input type="text" value="Eesnimi Perenimi"/>	Incoming mail server (POP3): <input type="text" value="mail2.bestit.ee"/>
E-mail Address: <input type="text" value="nimi@firma.ee"/>	Outgoing mail server (SMTP): <input type="text" value="mail.online.ee"/>
Logon Information	Test Settings
User Name: <input type="text" value="kasutajanimi"/>	After filling out the information on this screen, we recommend you test your account by clicking the button below. (Requires network connection)
Password: <input type="password" value="*****"/>	
<input checked="" type="checkbox"/> Remember password	<input type="button" value="Test Account Settings ..."/>
<input type="checkbox"/> Log on using Secure Password Authentication (SPA)	<input type="button" value="More Settings ..."/>

Vajutage nupule **Next** ja järgmises aknas **Finish**.