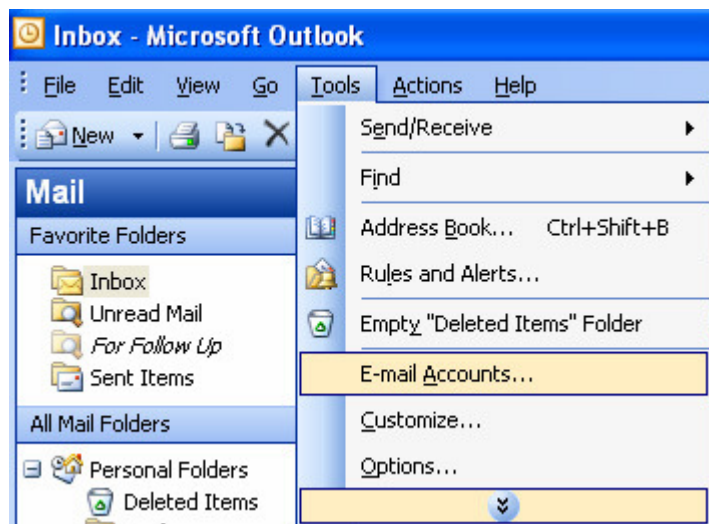


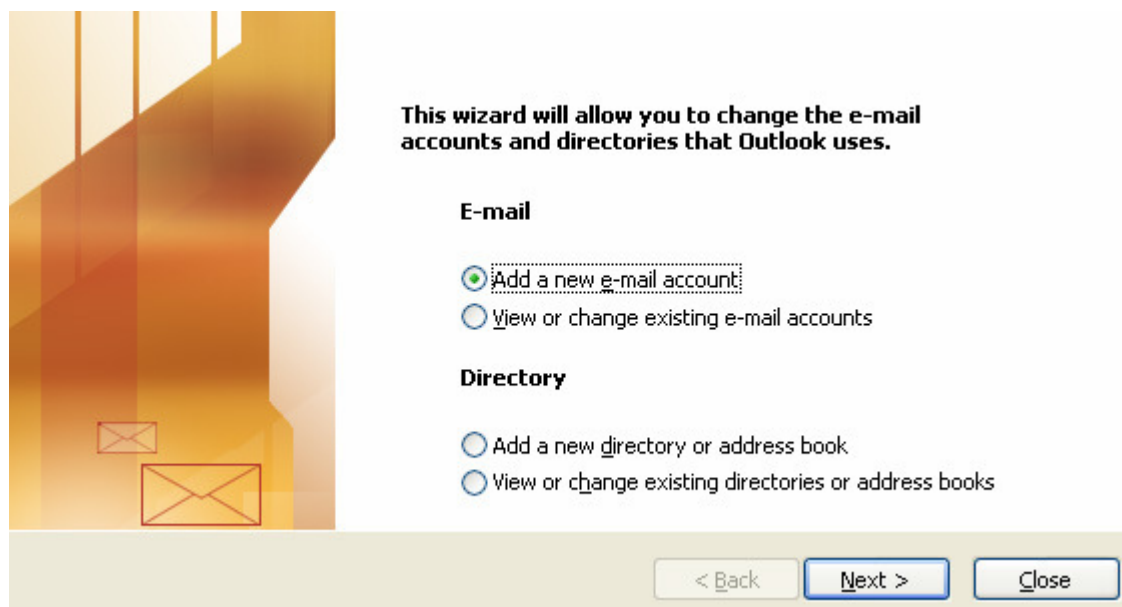
Juhendid e-posti meilikonto konfigureerimiseks

Outlook 2003 detailne juhend

- Avage **Outlook 2003**.
- Outlook enda juhendi leiate Help-ist.
- Valige **Tools -> E-mail Accounts...**



- Järgmisena kuvatakse Teile allolev aken. Kui soovite lisada uue e-posti konto, valige **Add a new e-mail account**.



Vajutage nupule **Next**.

- Valige siseneva meiliserveri tüüp. **POP3** tõmbab meilid serverist ära teie arvutisse, **IMAP** jätab meilid aga serverisse.

Server Type

You can choose the type of server your new e-mail account will work with.



Microsoft Exchange Server
Connect to an Exchange server to read e-mail, access public folders, and share documents.

POP3
Connect to a POP3 e-mail server to download your e-mail.

IMAP
Connect to an IMAP e-mail server to download e-mail and synchronize mailbox folders.

HTTP
Connect to an HTTP e-mail server such as Hotmail to download e-mail and synchronize mailbox folders.

Additional Server Types
Connect to another workgroup or 3rd-party mail server.

< Back Next > Cancel

Vajutage nupule **Next**.

- Seadistage oma uus konto.
 1. **Your name** lahtrisse kirjutage oma nimi.
 2. **E-mail address** lahtrisse kirjutage oma uus e-posti aadress.
 3. **Incoming mail server** lahtrisse kirjutage **mail2.bestit.ee**.
 4. **Outgoing mail server** lahtrisse kirjutage oma Internetiühenduse teenusepakkuja e-posti server. Käesolevas näites on ära toodud Elioni e-posti server.
 5. **User name** lahtrisse kirjutage oma vastava e-posti konto kasutajanimi.
 6. **Password** lahtrisse kirjutage oma vastava e-posti konto salasõna. Kui Te ei soovi iga kord uuesti salasõna sisestada, siis tehke linnuke märkeruutu **Remember password**.
 7. Veendumaks, et kõik õnnestus võite vajutada testimiseks nuppu **Test Account Settings**.

Internet E-mail Settings (POP3)

Each of these settings are required to get your e-mail account working.



User Information	Server Information
Your Name: <input type="text" value="Eesnimi Perenimi"/>	Incoming mail server (POP3): <input type="text" value="mail2.bestit.ee"/>
E-mail Address: <input type="text" value="nimi@firma.ee"/>	Outgoing mail server (SMTP): <input type="text" value="mail.online.ee"/>
Logon Information	Test Settings
User Name: <input type="text" value="kasutajanimi"/>	After filling out the information on this screen, we recommend you test your account by clicking the button below. (Requires network connection)
Password: <input type="password" value="*****"/>	
<input checked="" type="checkbox"/> Remember password	<input type="button" value="Test Account Settings ..."/>
<input type="checkbox"/> Log on using Secure Password Authentication (SPA)	<input type="button" value="More Settings ..."/>

Vajutage nupule **Next**.

- Olete oma konto seadistanud.



Vajutage nupule **Finish**.